

# Sugarloaf Ski Club

**HOMECOMING 2006 AT SUGARLOAF/USA**

**October 7, 8, 9**

---

**September 2006**

---

## **Special Rates for Ski Club Members**

Play 18 holes on the spectacular Sugarloaf Golf Course

\$55 per person includes greens fees and cart (special rate Oct 7, 8 and 9 after 12 PM)

Call the Pro Shop at 237-6812 to get tee times; mention membership when calling

Members-only rate; must bring membership card

## **Ski Club Reception and Pig Roast Supper**

**Saturday 4-6 pm at the Outdoor Center**

A "homecoming welcome" for ski club members; hors d'oeuvres and refreshments 4-5 pm

Big old-fashioned country-style pig roast supper at 5 pm

Menu includes roast pork, salads, rolls, soda, dessert

Tickets \$12 for members, \$15 non-members (under age 6 free)

Tickets are limited and will be sold at the Ski Club booth in the base lodge.

If any remain, they will be sold at the door.

Benefits the Ski Club Scholarship Program

## **Used Ski and Kayak Sale at Happy Tunes Ski Service Center**

**Saturday 10-6 and Sunday 10-3**

Support the Ski Club Youth Scholarship Program for local children

Drop off equipment Friday 3-8 pm and Sat. 8-10 am at Happy Tunes, next to Tufulio's.

Phone 235-TUNE.

## **Ski Club Information and Historical Display at the Ski Club Booth**

**Saturday 9-3 and Sunday from 9-3, First Floor of the Base Lodge**

Memorabilia of early Sugarloaf

Join the Sugarloaf Ski Club

## **Upstairs in the Narrow Gauge Room --- Ski Club Table**

Ski Club Note Cards with Vintage Photos

Plus other Ski Club logo items

---

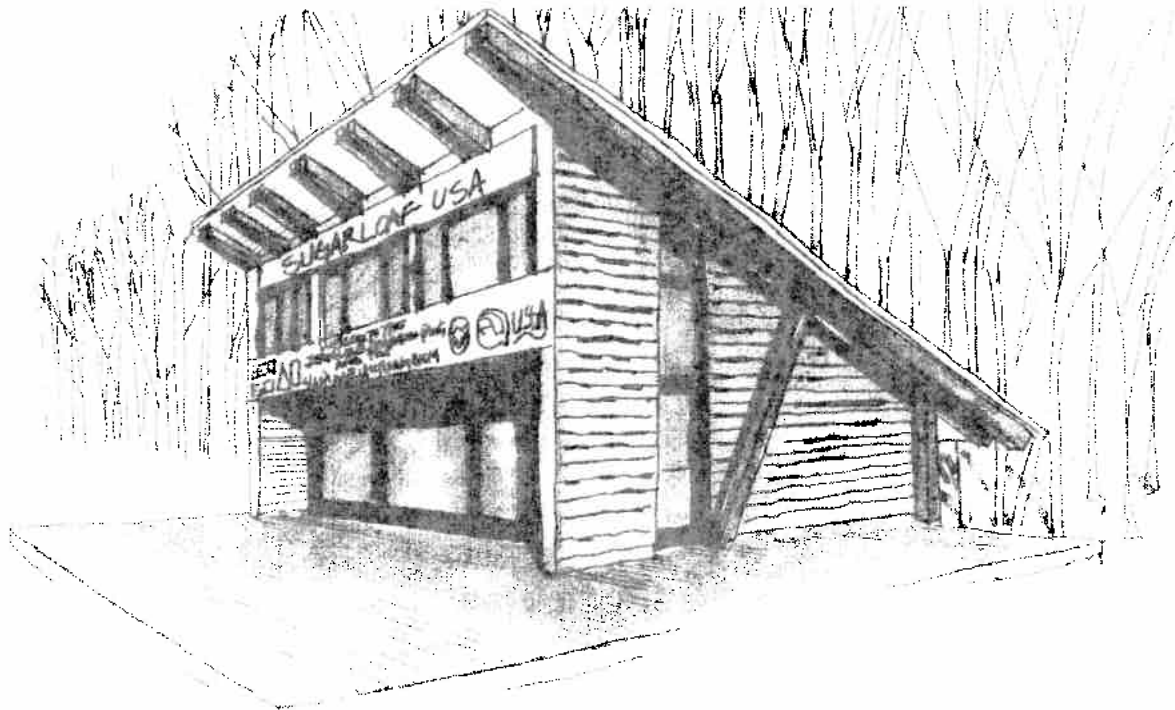
### NEW FACILITY AT COMPETITION ARENA

The Melvin House which was built for the World Cup in 1971, and the Jean Luce Competition Building which was built for the 1984 Junior World Competition are being replaced. Below you will see a drawing of the new facility. Special thanks go to architect and Ski Club member Rick Goduti for designing and helping with the project. The building will be placed at the bottom of Comp Hill and Narrow Gauge Kangaroo Hill so it may be used for events on either trail

This is a big project. It is being combined with huge trail and infrastructure work that has been done on Lower Narrow Gauge and Comp Hill. Upwards of \$200,000 will be invested in improvements before it is done. SMC has buried all the power lines that were attached to poles on skiers left and installed new communication lines which will give us the ability to transmit live racing results to the internet. Also, new cable will allow for placement of speakers at the Tote Road crosscut areas of Gauge and Comp Hill. We may even be able to broadcast over WSKI in the future.

Combined with new campus being built for CVA, this on hill facility will enhance the training, competition and educational experience for our Ski Club athletes.

For our part, your Ski Club, with the added financial help of the Town of Carrabassett Valley, SMC and private donations, is spearheading the building project. This is the biggest undertaking by your Ski Club in over 20 years. If you would like to be a part of this project by donating time or money, please contact me, Bruce Miles at [bmiles@farmingtontravel.com](mailto:bmiles@farmingtontravel.com). for details of our donor recognition programs.



Welcome To The  
Jean Luce Competition Facility  
and The  
Sara Melvin Training Room



## Maine Ski Hall of Fame Names 10 Inductees

The Maine Ski Hall of Fame is planning their annual banquet to honor 10 inductees to the 4<sup>th</sup> Annual Maine Ski Hall of Fame. Founded in 2003, the Maine Ski Hall of Fame seeks to honor instructors, competitors and other skiing visionaries -- men and women who have elevated the sport of skiing in Maine.

Sugarloaf/USA notables in this Class of 2006 includes Fletcher Brown, John Christie, Irv Kagan, Jack Lufkin, and Peter Webber.

**Fletcher Brown** has a rich history that goes back to 1934, when he became one of the first ski instructors at Cannon Mountain prior to and after World War II. He also helped organize Maine skiing and was hired by Amos Winter to help cut and clear Sugarloaf's 'signature' trail, Winter's Way.

**John Christie** began working at Sugarloaf in 1961 as a ski patroller. In 1964, Amos Winter named him general manager. While at Sugarloaf, he was instrumental in surveying the line for the towers of the gondola. He also helped to install T-bars 4, and 5. In 1964, Christie was elected president of the Maine Ski Council. In 1965, he was elected president of the Sugarloaf Ski Club and the Ski Maine Association. He was also an owner of Saddleback Mountain in Rangeley.

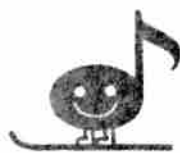
**Irv Kagan**, another Sugarloafer was a late comer to skiing. He didn't discover the sport until his mid-thirties, but he made up for it with a deep involvement in freestyle skiing. Kagan recognized the need for uniformity in the standards when Masters skiing evolved into freestyle, so he volunteered to chair the Eastern Freestyle Competition Committee where he developed scoring and judging protocols, which became the foundation for the US Ski Association taking over the sport. His input played a key role in freestyle developing into an Olympic sport.

**Jack Lufkin** was a standout cross country skier at Stevens High School in Rumford. He went on to race in highly competitive levels, winning state and New England titles in 1964. He continued racing at Fort Lewis College in Colorado, and in 1966, was named to the U.S. Team and the Olympic team in 1968. Lufkin was the first director of the Carrabassett Valley Touring Center.

—continued on p. 8

## HAPPY TUNES !!

## Ski Service Center



### HOMECOMING ANNUAL SKI AND KAYAK SALE

Consignment drop off Fri 3-8, Sat 8-10  
Pick-up Sunday 3-6, Monday 10-3  
Ski consignment proceeds benefit Ski Club Youth programs  
More junior equipment needed!  
Used whitewater playboats and expedition ocean kayaks

### HOMECOMING WEEKEND

Oct 7: 10 am to 6 pm  
Oct 8 and 9: 10 am to 3 pm

### RACING GEAR SPECIAL FROM HAPPY TUNES

From skis and boots to helmets and speedsuits..  
30% to 50% OFF This Weekend Only  
Sugarloaf Ski Club or USSA Members only

### RECREATIONAL JUNIOR LEASE PROGRAM

Skis, Boots, Bindings  
Complete Package Starts at \$99 !

**NEW AND USED TELE GEAR ON SALE !**

---

**VALLEY CROSSING, NEXT TO TUFULIO'S RESTAURANT  
RT 27, 7 MILES SOUTH OF ACCESS ROAD CALL 235-TUNE (235-8863)**

# Ski Museum of Maine

In the 1930s most skiing was done at small, local hills. The idea of a ski resort, a larger hill with year round appeal was a goal of many. The post war period saw many wonderful resorts open in Maine. It is interesting to look back at the early thinking and planning for these resorts. In 1926, before the sport of downhill skiing was fully established, Adolph Olsen wanted to build a fence around the Portland Expo, build a ski jump off the roof and charge admission. In 1939 plans were made to build a resort on Mt Waldo, just south of Bangor.

"Keeping pace with television, wirephoto and rocket ships is a dynamic movement to have a super modern mountain top park on Mt Waldo," wrote the Portland Sunday Telegram in January, 1939.

Technological advances brought exciting changes and some people thought it was time for Maine to have its first big ski resort. Plans were made to build a four-season park on 1,000 foot tall Mt. Waldo. The smooth granite top would be used as a landing strip for airplanes.

"The observation tower will feature glass block masonry with lights behind," wrote the Portland Sunday Telegram. "Elevated balconies will be of wrought iron. The crowning feature of the 90 foot tower will be the beacon, serving not only as an air travel guide but as a natural, appealing and fascinating attraction to observers from miles around."

"For winter attraction this promotion bids fair to have ski jumps and trails that will compete with the best in the country. It will offer innumerable features of appeal for both beginners and veterans of open air activities." An Aerial tramway was one option being considered for skiers. Another was to use specially designed tractors to haul wagons full of skiers back to the top.

Television, wirephotos and even rocket ships have become part of our society but the "super modern mountain top park on Mt Waldo was never built.

---Glenn Parkinson, Ski Museum of Maine

You can support the museum's efforts by becoming a member

Individual	\$15	Corporate	\$100
Family	\$25	Lifetime	\$500

Please send your check to: Ski Museum of Maine, PO Box 359, Kingfield ME 04947

[www.skimuseumofmaine.org](http://www.skimuseumofmaine.org)



**Farmington Travel**  
**Bruce Miles**

**125 Broadway**  
**Farmington ME 04938**

**1-800-244-4777 1-207-778-9811**  
**bmiles@farmingtontravel.com**  
**www.farmingtontravel.com**

**WELCOME HOME**  
**FELLOW SUGARLOAFERS**

**JOIN BRUCE AND KATHY MILES**  
**FOR A FOUR STAR VACATION**  
**IN**

**PARIS AND ZERMATT**

**FEBRUARY 14-24, 2007**

**SKI OVER 6000 VERTICAL FEET**  
**IN ONE RUN**

**CONTACT US**  
**FOR MORE INFORMATION**

**OR**

**LET US ARRANGE YOUR SKI TRIP TO**  
**EUROPE OR THE WEST**

#### Sugarloaf Mountain Ski Club Social Events for 2006 – 2007

This year our social calendar starts off with the Homecoming Pig Roast at the Touring Center on October 7<sup>th</sup> and ends with the MARA BBQ on March 24<sup>th</sup>.

In January we have our Annual Meeting which will be a repeat of last year: a lasagna dinner for Club Members only, at the Golf Club on January 27<sup>th</sup>. Due to the popularity of this event and the limited seating, it will be for dues paying Club Members only; no guests or dates. If you have a wife or significant other and want them to attend, they will have to have Club Membership. Because of limited space, this year we will be issuing free tickets to Club Members on a first come first serve basis. You must pick up your tickets at the Ski Club office in January (none will be mailed).

Over February vacation we are having a potluck supper at the Competition Center. In the past, this has been a popular event with children and families. The date is February 20<sup>th</sup> which coincides with fireworks on the mountain.

Mark your calendar for the Snowball in March. Oliver Twist will again be performing.

Oh, and don't forget the MARA BBQ. It's always fun to watch the kids race and then have a hot dog or burger between runs; it is a week earlier this year and is scheduled to coincide with races for the younger racers, the J 3,4,5 groups.

## THE SUGARLOAF OUTDOOR CENTER 2006 2007

The Sugarloaf Outdoor Center is preparing for another exciting season! With conditions permitting, the 2006/ 2007 season is scheduled to kick off on Friday, November 24, 2006 and extend through Sunday, April 1, 2007.

Season passes are still available and taxpayers may enjoy reduced rates. Property owner fees for 2006/2007 are \$185/ adult and \$135/ JR (6-12) and SR (60+). Alpine season pass holders may also upgrade any pass product to include Nordic skiing privileges for \$135/ adult and \$115/JR & SR. As in past years, season pass holders may enjoy New England's longest ski season and unlimited skating on the outside rink.

A full array of programs is scheduled for 2006/ 2007. Guided snowshoe tours, family skating parties, and our popular Junior and Adult Hockey programs will be held weekly from late December through mid March. The event calendar has not been finalized but a variety of volunteer opportunities will be available to ski club members and their friends at all events. Benefits will include one alpine lift ticket voucher for each full day worked. Once the event schedule is determined, information on volunteering opportunities will be made available to the Ski Club Office. To volunteer for any event, please phone 237-6830.

Skiers will enjoy the same extensive trail network offerings as in 2006. At this time, fall trail crews are making substantial improvements to all of the trails to ensure that the network is in great shape for the winter.

Exciting planning continues on the Town of Carrabassett Valley's proposed "Touring Center Improvement Plan", a comprehensive review of, and long range plan for, major facility improvements to the buildings, grounds and trails on the Town Lot. Concept plans are on display at the Town Office.

Hours of operation will be 9:00 am to 5:00 pm Sunday through Friday, and 9:00 am to 8:00 pm Saturdays and holiday weeks (rink conditions permitting).

---Suc Foster

### DISTANT JOURNEYS

#### \* Cross-Country Skiing in Austria \*

January 27-February 3, 2007

**The Leutasch Valley,**  
*surrounded by the beautiful  
Wetterstein and Karwendel mountains,  
is one of the most outstanding  
cross-country ski areas in all of Europe*



Please call or email for more information

888-845-5731

journeys@distantjourneys.com • www.distantjourneys.com

**DISTANT JOURNEYS**

PO Box 1211 • Camden, ME 04843

Burton  
Scott  
Marker

ATOMIC / FISCHER / K2 / HEAD / STOCKLI  
DYNASTAR / BLIZZARD / ROXY / ELAN

Karbon  
Smith  
Swix

# Ski DEPOT

Rt.#4 Jay - Bangor Street - Augusta - Black Mountain Rumford

**Skis : Snowboards : Outerware : Accessories : Kayaks**

**Sales / Service / Rentals**

**Rt.#4 Jay Maine - on your way to the "Loaf"**

**Free Same Day Shipping | Owners "In the Shop" & "On the Hill"**

**Toll Free 1 866 754 3376**

**ski-depot.com**      **RaceSkis.com**

## COMPETITION VOLUNTEERS

The Competition Center is always looking for volunteers to assist in running Events. The Ski Club has traditionally assisted in providing these individuals.

Volunteering is not always about standing on the side of a trail in the wind and cold tending gates, hand timing, fixing moguis; many jobs are inside and those outside can be very rewarding. There is a lot of camaraderie within the volunteer group, and many who assisted at last years US Alpine Nationals have indicated that they would be available to help out this year.

Laurel Lashar from the Competition Center will have a booth in the Base Lodge during Homecoming Weekend and Lev Steeves from the Ski Club will also be around to help explain the various needs and the types of jobs which need filling and provide "sign up" sheets for the events this coming season. Many of the positions provide great spots from which to watch the racers, and are easy to learn.

Please stop by on Homecoming Weekend or drop in to the Competition Center after the Mountain opens and talk to Laurel about this important activity.

— Lev Steeves

## Another Journey Begins

Headmaster John Ritzo, starts every school year reminding CVA's faculty and student athletes that each year is a new and unique journey. This year's journey is filled with significant new beginnings.

Enrollment for the 2006-07 school year is 118 - the largest ever with winter term. The student body consists of 78 students from Maine, 42 that participated in the S/CVA program, 24 from New England, 6 from outside the US, and 3.2% receive financial aid.

The new Jean Luce competition building, thanks to all of you at the Ski Club. On behalf of all the CVA student-athletes, parents, family and visiting competitors, we want to express our deepest gratitude to the Ski Club and Sugarloaf for undertaking such a significant project. Having a building located at the base of Narrow Gauge and Competition Hill and at the top of the new terrain park is a tremendous addition to the mountain that we train on every day. The location and size of this building really makes a statement about the Ski Club and Sugarloaf's commitment to competition. There will also be those occasional cold days of winter when the warming room will be a much welcomed place to regroup or watch training footage.

CVA is moving forward with the final stage of Phase I of a new campus with the construction of a new dorm with faculty apartments. Phase I of the new campus includes the purchase of 22 acres of land, creation of the soccer field and track, and the dorm. Excavation of the site and the foundation was built and poured over the summer by local contractors. The current target is to build one wing of the dorm and the atrium to have the capacity for 72 boarding students for the fall of '07. The fundraising is continuing to complete the second wing. The project is being overseen by area contractor Clem Be- gin and Greg West is the project manager. Harriman Associates of Auburn are the architects.

To prepare for this year's journey and new beginnings we've continued our workouts throughout the summer, been to summer camps at the AGC, and in British Columbia, New Zealand, and Lake Placid so we can hit fall training in full stride. If you get the chance this fall come watch a soccer game, mountain bike race or skateboard competition. The dates for these events and all the CVA and Sugarloaf events are listed in the CVA Spillway. If you don't already have a copy of the Spillway, then you need to stop by or call school at 207-237-2250.

### **CVA's Annual Tent Sale Bigger and Better than Ever**

Start the season off with great deals on new and used ski and snowboard equipment and apparel as well as other sporting goods.

**October 7<sup>th</sup> 10:00 AM to 5:00 PM  
New location at the AGC**

Drop off times Friday 4-8 PM  
and Saturday 8-10 AM

Call 237-2250 for more details

---Rick Bisson, CVA Communications

-- continued from p. 3, Ski Hall of Fame

**Peter Webber** has been involved with the ski industry for over 60 years. He raced in the first Sugarloaf Schuss over 53 years ago. He began his relationship with Sugarloaf in the 1950's, when he, founders Amos Winter and Stub Taylor walked to the trails from Route 27 to ski. After college, Webber opened several ski shops, and became sales manager for K2 Ski Company. In the mid-70's, he owned and operated the Sugarloaf Inn. He was also instrumental in developing the 18-hole championship golf course at Sugarloaf, and the Sugartree health Club, making Sugarloaf/USA a four-season resort area.

Other inductees are Charles Akers, Ray Broomhall, Norm Cummings, Dick Gould, and George Ouelette.


The banquet will be held at Lost Valley Ski Resort in Auburn, on Friday, October 27, 2006. Social hour with a cash bar is from 5 to 6:30 p.m. Dinner and awards ceremony begins at 6:30.

Tickets for the dinner are \$30 each. The menu includes a choice of prime rib or chicken and haddock. Make check payable to the Maine Ski Hall of Fame Dinner, c/o Ski Maine Association, P.O. Box 7566, Portland, ME 04112.

For additional information or to reserve your ticket(s), call the Ski Maine Association at (207) 761-3774, or reserve your ticket(s) online at [www.ski.org](#). Click on the Ski Hall of Fame icon and go to Individual Reservations Form. RSVP by Friday, October 18, 2006.

--- Dan Cassidy, Ski Tracks/INSide the OUTside





**THE PLACE TO BE ANYTIME...DAY OR NIGHT**

**Lunch:** featuring Pizza, Salads, Sandwiches  
**Leisurely Dinner:** featuring Pasta, Seafood, Steaks & Pizza

Join us in our Smoke-Free Greenhouse  
 Overlooking the Slopes  
 237-2192

Open Daily for Lunch & Dinner  
 Use your Ski Club Discount

**SKI CLUB LOGO ITEMS**

We have lots of nice Sugarloaf Mountain Ski Club logo items for sale. Support the Club, show you are a member—all at the same time!

Such items as:

- Vintage note cards \$10
- Roomy grey sweatshirts: \$25
- Heavy white tee shirts, with an outline of Maine: \$12
- Also gray tee shirts: \$10
- Great blue denim shirts: \$35
- Golf shirts: \$25 and 28
- Baseball hats: \$15
- Child-size baseball hats: \$12
- Pushovers: \$8 on sale
- Full aprons (with pockets) for ski tuning or barbecuing: \$20
- First Trail posters: \$5

The office is open every weekend from about 8:30 to 1:30 or 2, and sporadic week-day hours.

**Sugarloaf Ski Club Membership Form: 2006/2007**

*Have you renewed??*

Name \_\_\_\_\_

Mailing Address \_\_\_\_\_

Town \_\_\_\_\_ State \_\_\_\_\_ Zip \_\_\_\_\_

Home Phone \_\_\_\_\_ S'Loaf phone \_\_\_\_\_

E-mail address: \_\_\_\_\_

Would you like to receive occasional club bulletins by email? \_\_\_\_\_ yes \_\_\_\_\_ no

Family \$50 \_\_\_\_\_ Couple \$40 \_\_\_\_\_ Single \$ 25 \_\_\_\_\_

Children in family membership \_\_\_\_\_

# BEST BRANDS • BEST PRICES

Volkl  
K2  
Fisher  
Salomon  
Dynastar  
Atomic  
Elan  
Palmer  
Scott



Tecnica  
Nordica  
Marker  
Head  
Rossignol  
Lange  
Look  
Goode  
Line  
Luggage

Same Day  
Free  
Shipping

[www.untracked.com](http://www.untracked.com) 877-865-0740

No Sales  
Tax  
(Outside ME)

## CONTACTS

Ski Club Office at the Competition Center  
Bonnie Stagers, Administrator  
207-237-6955  
207-237-3026 (FAX)-winter only  
sugski@tdsteime.net (EMAIL)

Bruce Miles, President 235-2495  
Steve Schaefer, Vice-Pres 237-2120  
Nancy Holliday, Secretary 235-3446  
Philip Hunter, Treasurer 246-6181  
Mary Jean Doyle, Membership 246-3283

Sugarloaf Ski Club  
Village West #13  
Carrabassett Valley ME 04947



**Homecoming at Sugarloaf coming soon. Be There !!**